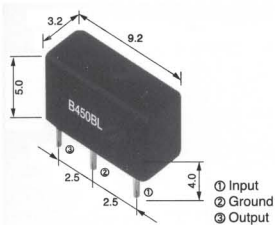


YIC Ceramic Filter (LTB / LT10.7 / LTCA10.7 / LTCV10.7 Series)

LTB Series of Ceramic Filter for Communication

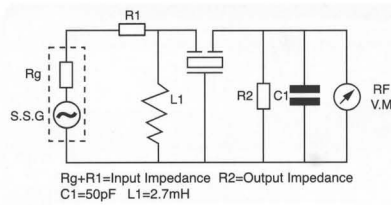
450 - 470KHz

TECHNICAL CHARACTERISTICS

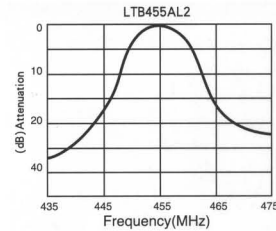


Part Number	Center Frequency (fn) (KHz)	6dB Band Width (KHz) min	Selectivity ± 9 KHz off (dB) min	Pass Band Ripple (dB) max	Insertion Loss (dB) max	Input / Output Impedance(Ω)
LTB450AL2	450 \pm 2	4	18	1.0	6.8	1.0/1.5
LTB455AL2	455 \pm 2					
LTB465AL2	465 \pm 2					
LTB450BL2	450 \pm 2	6	16	1.0	5.8	1.5/2.0
LTB455BL2	455 \pm 2					
LTB465BL2	465 \pm 2					

TEST CIRCUIT



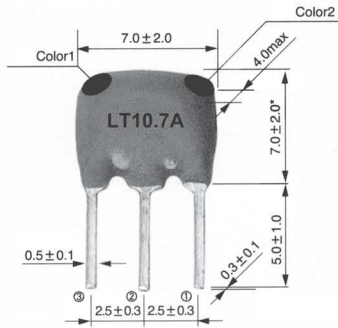
CHARACTERISTICS



LT 10.7 Series of Ceramic Filter for FM

10.7MHz

TECHNICAL CHARACTERISTICS



① Input *L, LA10: 6.0max
② Ground
③ Output

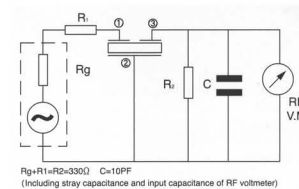
Color1:MA5,MA5A10,MS2,MS2A10,MJA10
Color2:MS3,MS3A10,MHY,MJ

Part Number	3dB Band Width(kHz)	20dB Band Width (kHz)max	Insertion Loss (dB)max	Spurious Response (9-12MHz)(dB)
LT10.7MA5	280 \pm 50	650	6	30
LT10.7MS2	230 \pm 50	600	6	40
LT10.7MS3	180 \pm 40	520	7	40
LT10.7MJ	150 \pm 40	400	10	38
LT10.7MA19	350min	950	3 \pm 2	20
LT10.7MA20	330 \pm 50	680	4 \pm 2	30
LT10.7MFP	20 min	95	6.0max	24
LT10.7MHY	110 \pm 30	350	7 \pm 2	30
LT10.7MA5A10	280 \pm 40	590	2.5 \pm 2	30
LT10.7MS2A10	230 \pm 40	520	3.0 \pm 2	35
LT10.7MS3A10	180 \pm 40	470	3.5 \pm 1.5	35
LT10.7MJA10	150 \pm 40	360	4.5 \pm 2	35

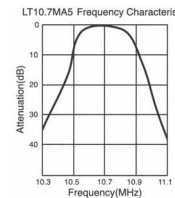
SPECIFICATION

Center Frequency	Color
D:10.64MHz \pm 30KHz	Black
B:10.67MHz \pm 30KHz	Blue
A:10.70MHz \pm 30KHz	Red
C:10.73MHz \pm 30KHz	Orange
E:10.76MHz \pm 30KHz	White

TEST CIRCUIT



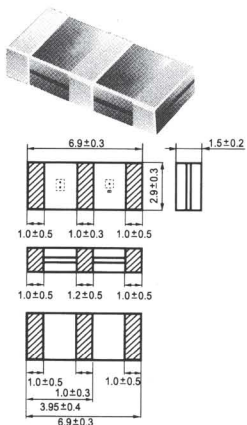
CHARACTERISTICS



Chip Type LTCA/CV10.7 Series of Ceramic Filter for FM

10.7MHz

TECHNICAL CHARACTERISTICS



Part Number	3dB Band Width (kHz)max	20dB Band Width (kHz)max	Insertion Loss (dB)max	Spurious Attenuation (9-12MHz)(dB)min
LTCA10.7MA5	280 \pm 50	650	6.0	30
LTCA10.7MS2	230 \pm 50	600	6.0	30
LTCA10.7MS3	180 \pm 40	520	7.0	30
LTCV10.7MA5	280 \pm 50	590	3.0 \pm 2.0	35
LTCV10.7MS2	230 \pm 50	510	3.5 \pm 2.0	35
LTCV10.7MS3	180 \pm 40	470	4.0 \pm 2.0	35

Input/output Impedance:330 Ω