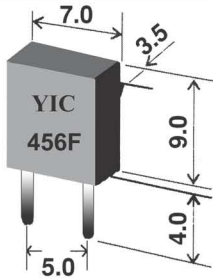


# YIC

## Ceramic Resonator, Filter (ZTB/LT/SFU Series)

### ZTB456F Series for FM Multiplexers

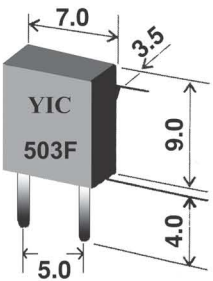
456KHz



Part Number	Frequency Accuracy	Applied IC
ZTB456F11	19.000KHz $\pm$ 38Hz	LA3430(SANYO)
ZTB456F14	19.000KHz $\pm$ 38Hz	TA7413AP(TOSHIBA)
ZTB456F15	456KHz $\pm$ 2KHz	LA1382(SANYO)
ZTB456F16	19.000KHz $\pm$ 38Hz	TA8122N(TOSHIBA)
ZTB456F18	19.000KHz $\pm$ 38Hz	TA8132N(TOSHIBA)
ZTB456F33	456KHz $\pm$ 2KHz	LA2232(SANYO)

### ZTB503/500F Series for TV Horizontal Synthesizer Circuits

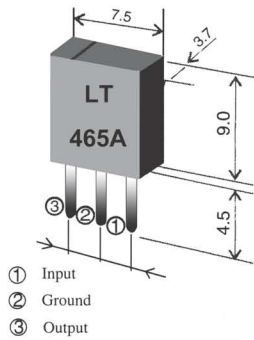
500/503KHz



Part Number	Frequency Accuracy	Applied IC
ZTB503F2	503.5KHz $\pm$ 2KHz	$\mu$ PC1401(NEC)
ZTB503F5	504.5KHz $\pm$ 2KHz	LA7620(SANYO)
ZTB503F6	519.0 KHz $\pm$ 2KHz	M5130(MITSUBISHI)
ZTB503F10	15.734KHz $\pm$ 0.5%	TA7777P(TOSHIBA)
ZTB503F12	503.5KHz $\pm$ 2KHz	TDA3586(THOMSON)
ZTB503F15	505.1KHz $\pm$ 2KHz	LA7650(SANYO)
ZTB503F30	503.5KHz $\pm$ 1.5KHz	TA8654AN(TOSHIBA)
ZTB503F38	15.734KHz $\pm$ 62KHz	AN5302(MATSUSHITA)
ZTB500F2	500.0KHz $\pm$ 2KHz	$\mu$ PC1401(NEC)
ZTB500F9	500.0KHz $\pm$ 2KHz	M51308SP(MITSUBISHI)
ZTB500F13	500.0KHz $\pm$ 2KHz	M51367SP(MITSUBISHI)
ZTB500F28	15.680KHz $\pm$ 0.4%	LA76800(SANYO)
ZTB500F40	15.680KHz $\pm$ 0.4%	TA8691N(TOSHIBA)
ZTB500F55	15.680KHz $\pm$ 0.4%	LA7685(SANYO)

### LT Series of Ceramic Filter for Radio-Cassette Recorder

450-470KHz

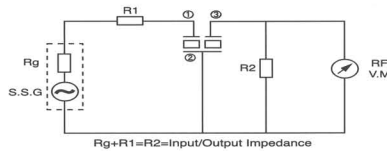


#### TECHNICAL CHARACTERISTICS

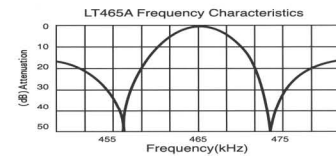
PartNumber	Insertion Loss (dB)	Pass Band Width (kHz)	Stop Band Att(dB) fo $\pm$ 100 kHz	Selectivity $\pm$ 9KHz off(dB)	Ripple (dB)	Input/Output Impedance (K $\Omega$ )
LT 465A1	$\leq$ 3	$\geq$ 8	$\geq$ 12	$\geq$ 11	$\leq$ 1	2

Center frequency (fo) is available in a range of 450-470kHz  
The nominal frequency tolerance is  $\pm$  2kHz

#### TEST CIRCUIT

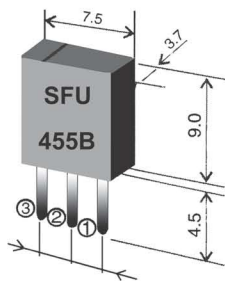


#### CHARACTERISTICS



### SFU Series of Ceramic Filter for AM

450-470KHz



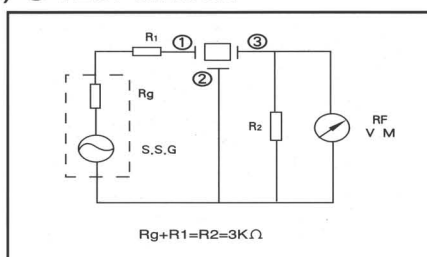
#### TECHNICAL CHARACTERISTICS

PartNumber	3dB Band Width(kHz)	Selectivity $\pm$ 9KHz (dB)		Insertion Loss (dB)	Composition
		-9KHz off	+9KHz off		
SFU455A	10 $\pm$ 3	$\geq$ 5	$\geq$ 3	$\geq$ 5	1 elements
SFU455B	10 $\pm$ 3	$\geq$ 5	$\geq$ 3	$\geq$ 5	1 elements With IFT

Center frequency (fo) is available in a range of 450-470kHz  
The nominal frequency tolerance is  $\pm$  2kHz

#### RECOMMENDED IFT (7mmSquare) TEST CIRCUIT

Type	SFU455B		
Item	① ~ ②	② ~ ③	④ ~ ⑥
	70T	115T	7T
Unload Qu	105		
Tuning Capacity	180PF		



#### CHARACTERISTICS

