

OSC Series : Half Size (8Pin) , Full Size (14Pin)

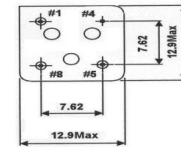
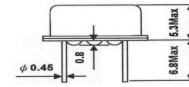
20.000KHz - 160.000MHz

● SPECIFICATION

Model	Half Size (8Pin) , Full Size (14Pin) Series
Frequency range	20KHz ~ 160.000 MHz
Storage temperature range	- 55°C ~ + 125°C
Operation temperature range	- 10°C ~ + 70°C , - 40°C ~ + 85°C Available
Frequency stability	±20 ppm ~ ±50ppm
Power supply voltage: (5.0V DC available on request)	1.8V ~ 5V
Current consumption	15 ~ 45mA max
Output level	C-MOS
Load	10 TTL/15pF or 30pF
Output voltage level	CMOS : VOL= 10% Vdd max. / VOH= 90% Vdd min. TTL : VOL= 0.4Vdd max. / VOH= 2.4Vdd min.
Duty cycle	40% ~ 60% at 1/2 Vdd
Star-up-TIME	10mSec.max (5mSec.Typical)
Rise / Fall Time	10nSec.max (5nSec.Typical)
AGING	±3ppm / Year
N.C. (Default) or Tri-State Enable / Disable of Pin 1	Enable : NC or High Disable : Low

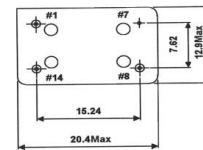
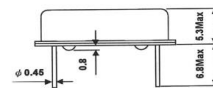
● DIMENSIONS (mm)

Half Size (8Pin)



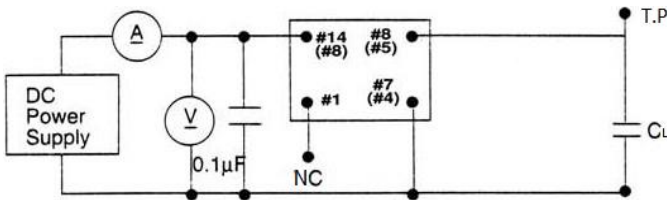
Pin	Connection
#1	N.C. (or Tri-State)
#4	GND
#5	Output
#8	+ VDD

Full Size (14Pin)



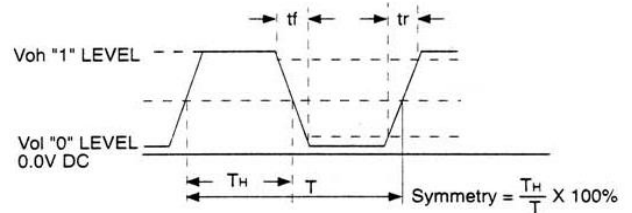
Pin	Connection
#1	N.C. (or Tri-State)
#7	GND
#8	Output
#14	+ VDD

● TEST CIRCUIT



CL = 15pF (including fixture and probe capacitances)

● OUTPUT WAVEFORM



Crystal Clock Oscillator Part Numbering System

• Models : OSC , OSCLD , OSCLP , OSCHS

OSC		M	K					
Output Type	Frequency in M(K)Hz			Supply Voltage (VDD)	Operation Temp.	Package Code	Stability	Output Symmetry
Blank : CMOS	MHz : $\geq 1.0\text{MHz}$	M: MHz		0.9 : 0.9V	1 : -10 ~ + 60°C	H : Half	-5 : ± 5PPM	Blank : 40/60%
LD : LVDS		K: KHz		1.2 : 1.2V	Blank : -10 ~ + 70°C	F : Full	-10 : ± 10PPM	T : 45/55%
LP : LVPECL	KHz : < 1.0MHz			1.5 : 1.5V	2 : -20 ~ + 70°C	S7 : 7*5 SMD	-15 : ± 15PPM	Blank : Others
HS : HCSSL				1.8 : 1.8V	27 : -20 ~ + 75°C	S5 : 5*3.2 SMD	-20 : ± 20PPM	
				2.5 : +2.5V	28 : -20 ~ + 85°C	S3 : 3.2*2.5 SMD	-25 : ± 25PPM	
				2.8 : 2.8V	37 : -30 ~ + 75°C	S22 : 2.5*2.0 SMD	-30 : ± 30PPM	
				3 : 3.0V	3 : -30 ~ + 80°C	S21 : 2.0*1.6 SMD	Blank : ± 50PPM	
				3.3 : 3.3V	38 : -30 ~ + 85°C		-100 : ± 100PPM	
				5V : 5.0V	I : -40 ~ + 85°C			
				A : 1.8~3.3V	A : -40 ~ + 105°C			
				B : 2.5~3.3V	B : -40 ~ + 125°C			
					C : -55 ~ + 125°C			
					X : CUSTOM			