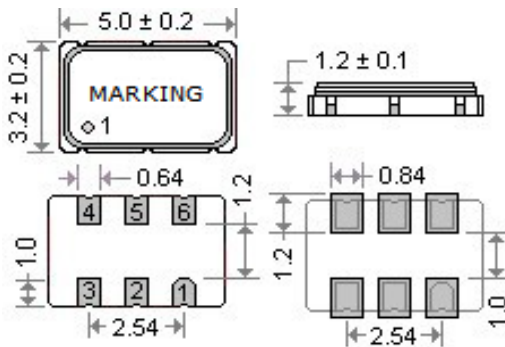


● SPECIFICATION

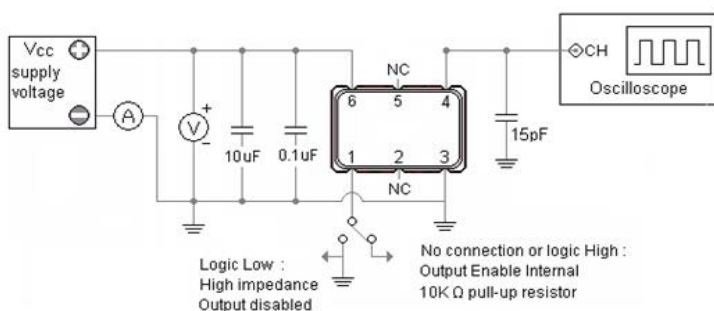
Model	O-S5 Series	
Power supply voltage	2.5V DC $\pm 5\%$	3.3V DC $\pm 5\%$
Output level	CMOS	
Frequency range	10.000 ~ 250.000 MHz	
Storage temperature range	- 55°C ~ + 125°C	
Operation temperature range	- 10°C ~ + 70°C , - 40°C ~ + 85°C , - 40°C ~ + 125°C	
Frequency stability	± 20 ppm ~ ± 100 ppm	
Current consumption	40mA max	
Output Load	15pF	
Output voltage level (VOL)	10% V _{DD} max.	
Output voltage level (VOH)	90% V _{DD} min.	
Start-up Time	10ms max.	
Duty cycle	45% ~ 55% at 1/2V _{DD}	
Rise / Fall Time	3.0ns max.	
Phase Jitter RMS (12KHz~20MHz)	2.0ps max.	
Aging at 25°C	± 2.0 ppm max. in the 1st year	
Tri-state OE (Pad 1)	Enable : 70% V _{DD} min.	
	Disable : 30% V _{DD} max.	

● DIMENSIONS (mm)



Pad Connections	
Pad 1 : OE - High Enable	Pad 4 : Output
Pad 2 : No connection	Pad 5 : NC
Pad 3 : Ground	Pad 6 : Input Voltage

● TEST CIRCUIT



● OUTPUT WAVEFORM

