

# YIC

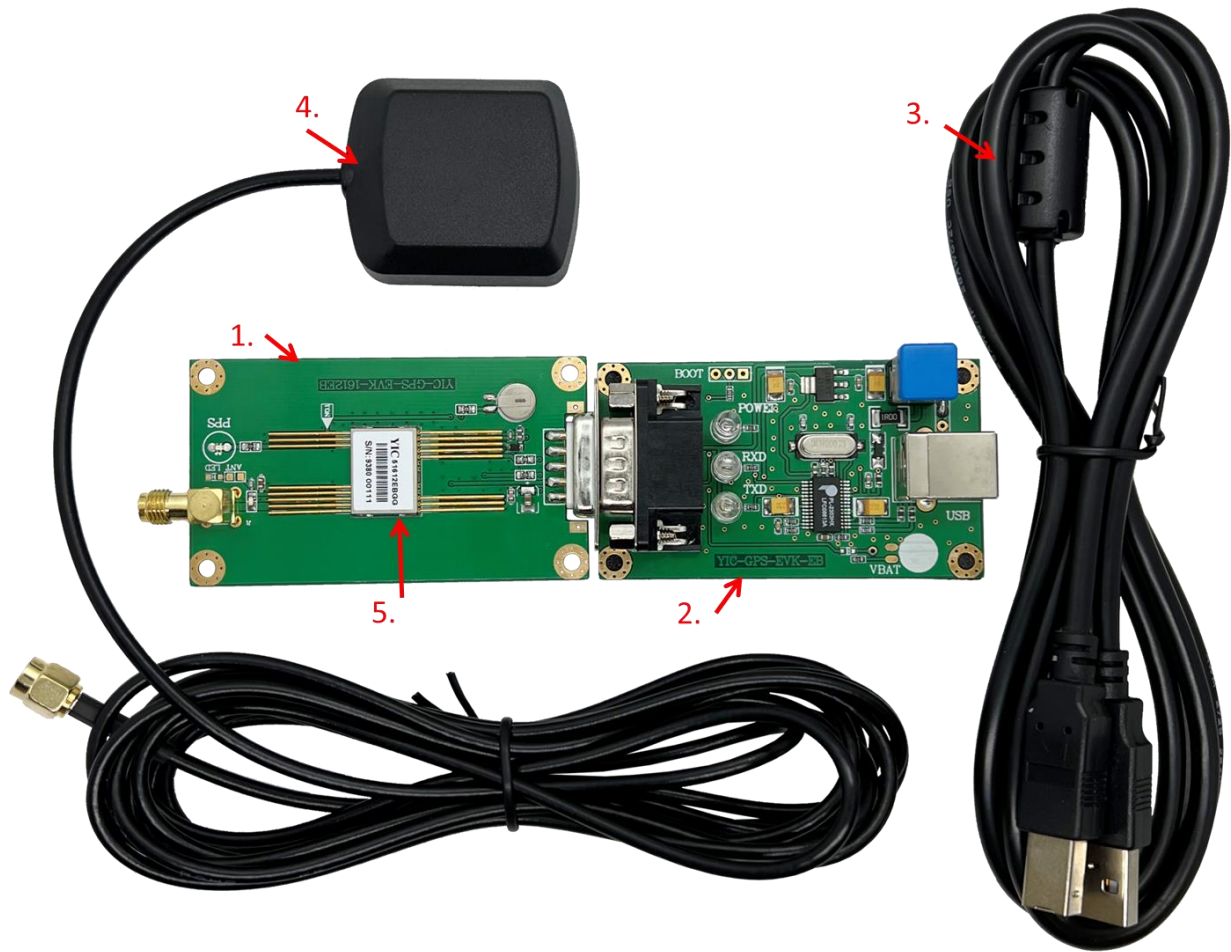


## Evaluation Kit for YIC31612EB Series EVK-YIC31612EBGG

## User Guide


[www.yic.com.tw](http://www.yic.com.tw)

## 1. Contents of EVK-YIC31612EBGG

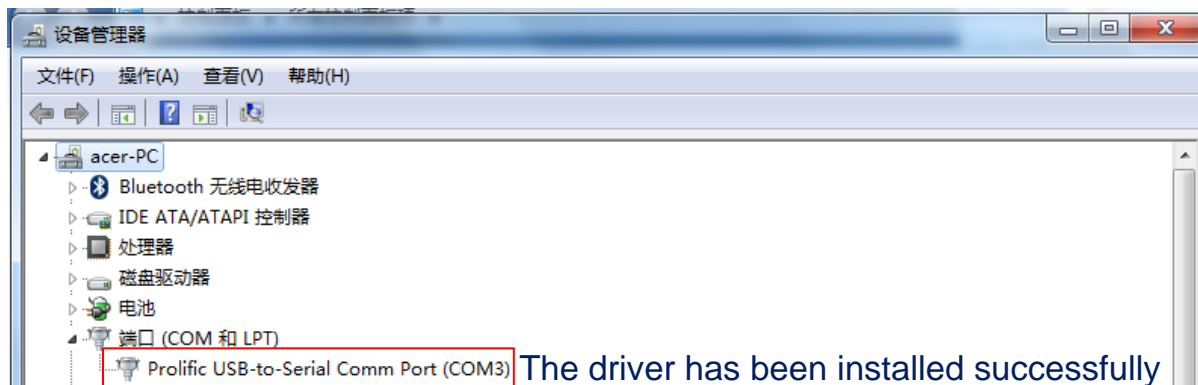


	Item	Description
1.	YIC-GPS-EVK-1612EB	Main Board
2.	YIC-GPS-EVK-1612EB	Adaptor Board
3.	USB Cable	USB Type B to USB Type A
4.	ATGG4336M-SMA-3	Single Band GNSS L1 Antenna
5.	YIC31612EBGG	GPS+GLONASS Module

## 2. Install the PL2303 USB driver to PC

 PL2303\_Prolific\_DriverInstaller\_v1210.exe

3.1 Install the PL2303 USB driver, open the computer control panel, check the corresponding serial port.

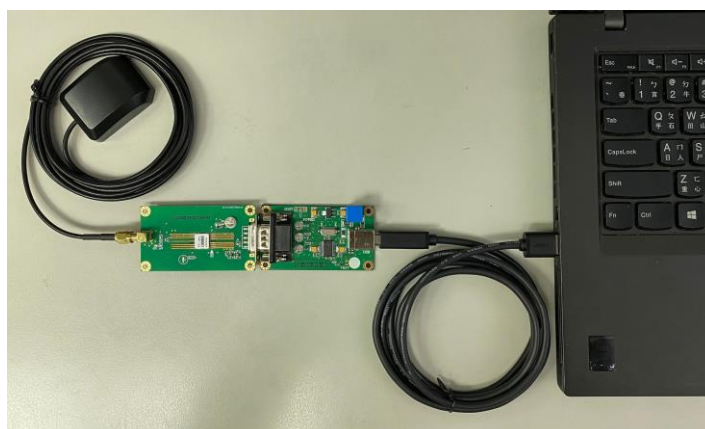


## 3. Connection diagram

3.1 Carefully slide the DUT GPS module into main board, pin 1 of the module corresponds to the arrow on main board.



3.2 Test connection



## 4. Install test software & start

### 4.1 For YIC31612EB series (Goke chip based)

4.1-1 Install test software: naviTrack

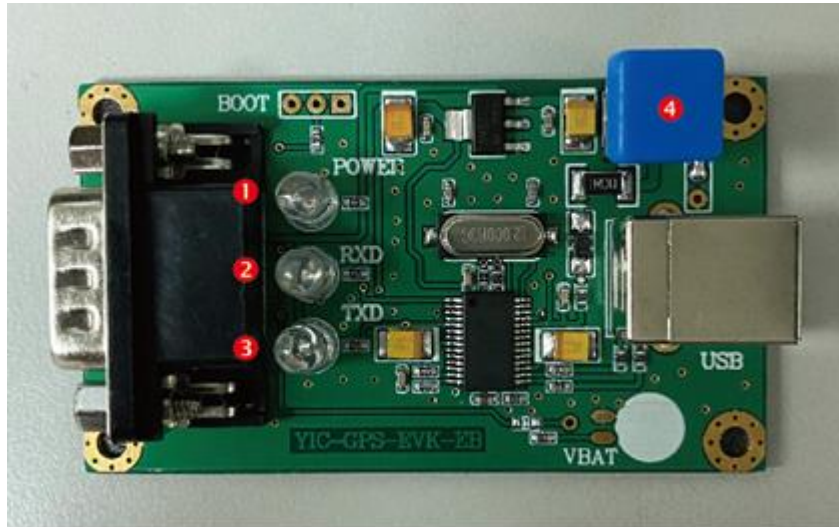
4.1-2 Software setting

- ① Select the corresponding serial port
- ② Select the corresponding baud rate (9600 or 115200,.....)
- ③ Click Connect to start the test

The screenshot displays the naviTrack - Track software interface. The top-left panel shows the 'COM' port selection (①) set to 'COM3', the 'BAUDRATE' (②) set to '9600', and the 'DnsConnect' button (③). The 'Track' panel shows a reference position plot. The 'Velocity' panel displays speed (0.0000 Km/h) and heading (250.15 W). The 'Signal' panel shows a bar chart of GNSS satellite positioning information for PRNs Q3 through R85. The 'Sky view' panel shows a circular constellation diagram. The 'NMEA info' panel displays a list of NMEA sentences, with the text 'NMEA output statement' overlaid in red. The 'Fix mode' panel shows a plot of Fix Mode and SPS quality over time.

## 5. LED and Push Button description

### 5.1 Adaptor Board



- ① Red LED: POWER, always on when power on
- ② Blue LED: RXD, often light while DUT GPS module receiving data
- ③ Green LED: TXD, flash once per second when DUT GPS module start sending data
- ④ Push Button: POWER, push to power on and off the EVK

### 5.2 Main Board

PPS LED: Flash once per second after satellite position fixed