

V Series : Programmable CMOS Voltage - Controlled Crystal Oscillators 10.000 ~ 250.000MHz

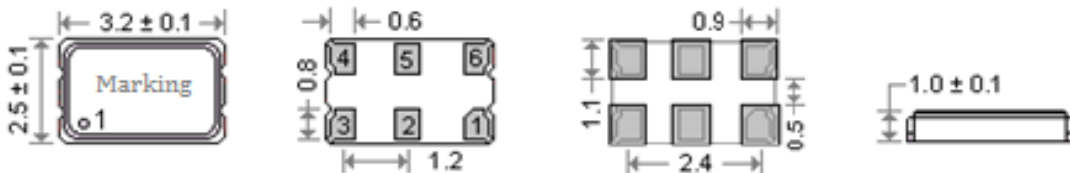
● SPECIFICATION

| | |
|---|---|
| Frequency Range | 10.000 ~ 250.000MHz |
| Input Voltage (V _{DD}) | +2.5V , +3.3V |
| Frequency stability | ±25ppm , ±50ppm , ±100ppm |
| Operation Temperature | -10°C ~ +70°C Typical , (-40°C ~ +85°C Available) |
| Storage Temperature Range | - 55°C ~ + 125°C |
| Output voltage level (V _{OL}) | 10% V _{DD} max. |
| Output voltage level (V _{OH}) | 90% V _{DD} min. |
| Control Voltage Range (V _c) | 1.25±1.0V (V _{DD} =2.5V) 1.65±1.35V (V _{DD} =3.3V) |
| Pulling Range | ±30ppm ~ ±200ppm min. |
| Output Load | 15pF |
| Start-up Time | 10 ms max. |
| Duty Cycle | 45% ~ 55% |
| Rise / Fall Time | 2 ns max. |
| Current Consumption | 50mA max. |
| Linearity | 10% max. |
| Aging at 25°C | ±2.0ppm max. in the 1st year |
| Tri-state OE (Pad 2) | Enable : 70% V _{DD} min. Disable : 30% V _{DD} max. |

● PART NUMBERING

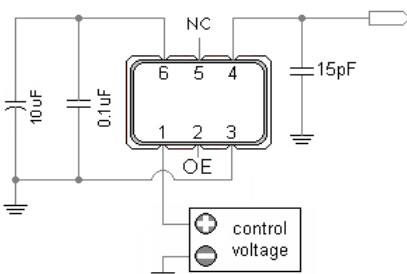
| V | Packing Code | Input Voltage | Operation Temperature | Pulling Range | Frequency | Stability | Custom Speci |
|---|--|--------------------------|---|--|-----------|--|--------------|
| | 756 : 7.0x5.0mm,6P 536 : 5.0x3.2mm,6P 326 : 3.2x2.5mm,6P | 2.5 : 2.5V 3.3 : 3.3V | 1 : -10~+60°C Blank : -10~+70°C 2 : -20~+70°C 27 : -20~+75°C 28 : -20~+85°C 3 : -30~+75°C 38 : -30~+85°C I : -40~+85°C A : -40~+105°C B : -40~+125°C C : -55~+125°C D : -40~+150°C X : Custom | A : ±30.0PPM B : ±50.0PPM C : ±100.0PPM D : ±200.0PPM | In MHz | 10 : ±10.0PPM 25 : ±25.0PPM 50 : ±50.0PPM 100 : ±100.0PPM | * |

● DIMENSIONS (mm)



PIN CONNECTIONS
 PIN 1 : [Voltage Control]
 PIN 2 : [OE]
 PIN 3 : [Ground]
 PIN 4 : [Output]
 PIN 5 : [No Connected]
 PIN 6 : [V_{DD}]

● TEST CIRCUIT



● OUTPUT WAVEFORM

