

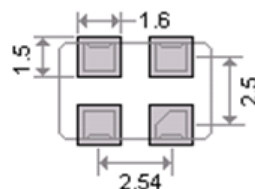
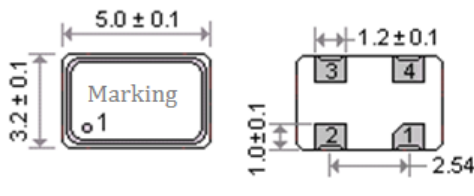
### ● SPECIFICATION

Frequency Range	1.000 ~ 200.000MHz
Input Voltage (V <sub>DD</sub> )	+1.8V , +2.5V , +3.0V , +3.3V , +5.0V
Frequency stability	±25ppm , ±50ppm , ±100ppm
Operation Temperature	-10°C ~ +70°C Typical , (-40°C ~ +85°C Available)
Storage Temperature Range	- 55°C ~ + 125°C
Output voltage level (V <sub>OL</sub> )	10% V <sub>DD</sub> max.
Output voltage level (V <sub>OH</sub> )	90% V <sub>DD</sub> min.
Control Voltage Range (V <sub>c</sub> )	1.25±1.0V (V <sub>DD</sub> =2.5V) 1.65±1.35V (V <sub>DD</sub> =3.3V)
Pulling Range	±30ppm ~ ±200ppm min.
Output Load	15pF
Start-up Time	10 ms max.
Duty Cycle	45% ~ 55%
Rise / Fall Time	2 ns max.
Current Consumption	50mA max.
Linearity	10% max.
Aging at 25°C	±2.0ppm max. in the 1st year
Tri-state OE (Pad 2)	Enable : 70% V <sub>DD</sub> min. Disable : 30% V <sub>DD</sub> max.

### ● PART NUMBERING

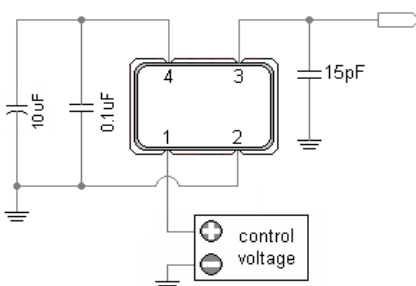
VX	Packing Code	Input	Operation	Pulling	Frequency	Stability	Custom
	<b>SMD Type</b>	1.8 : 1.8V	1 : -10~+60°C	A : ±30.0PPM	In MHz	10 : ±10.0PPM	*
	756 : 7.0x5.0mm,6P	2.5 : 2.5V	Blank : -10~+70°C	B : ±50.0PPM		25 : ±25.0PPM	
	534 : 5.0x3.2mm,4P	3 : 3.0V	2 : -20~+70°C	C : ±100.0PPM		50 : ±50.0PPM	
	536 : 5.0x3.2mm,6P	3.3 : 3.3V	27 : -20~+75°C	D : ±200.0PPM		100 : ±100.0PPM	
	324 : 3.2x2.5mm,4P	5 : 5.0V	28 : -20~+85°C				
	326 : 3.2x2.5mm,6P		3 : -30~+75°C				
			38 : -30~+85°C				
			1 : -40~+85°C				
	<b>Through Hole Type</b>		A : -40~+105°C				
	F : Full Size, 20.2x12.8mm		B : -40~+125°C				
	H : Half Size, 12.8x12.8mm		C : -55~+125°C				
			D : -40~+150°C				
			X : Custom				

### ● DIMENSIONS (mm)



PIN CONNECTIONS  
 PIN 1 : [ Voltage Control ]  
 PIN 2 : [ Ground ]  
 PIN 3 : [ Output ]  
 PIN 4 : [ V<sub>DD</sub> ]

### ● TEST CIRCUIT



### ● OUTPUT WAVEFORM

