

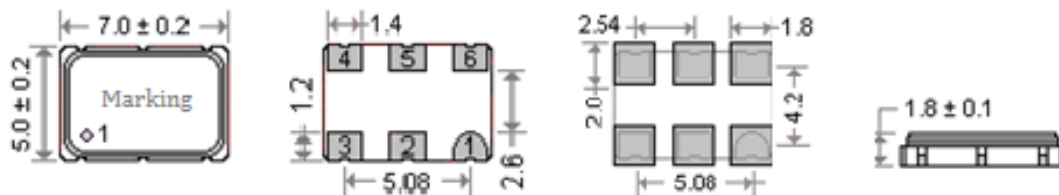
● SPECIFICATION

Frequency Range	1.000 ~ 200.000MHz
Input Voltage (V _{DD})	+1.8V, +2.5V, +3.0V, +3.3V, +5.0V
Frequency stability	±25ppm, ±50ppm, ±100ppm
Operation Temperature	-10°C ~ +70°C Typical, (-40°C ~ +85°C Available)
Storage Temperature Range	-55°C ~ +125°C
Output voltage level (V _{OL})	10% V _{DD} max.
Output voltage level (V _{OH})	90% V _{DD} min.
Control Voltage Range (V _c)	1.25±1.0V (V _{DD} =2.5V) 1.65±1.35V (V _{DD} =3.3V)
Pulling Range	±30ppm ~ ±200ppm min.
Output Load	15pF
Start-up Time	10 ms max.
Duty Cycle	45% ~ 55%
Rise / Fall Time	2 ns max.
Current Consumption	50mA max.
Linearity	10% max.
Aging at 25°C	±2.0ppm max. in the 1st year
Tri-state OE (Pad 2)	Enable : 70% V _{DD} min. Disable : 30% V _{DD} max.

● PART NUMBERING

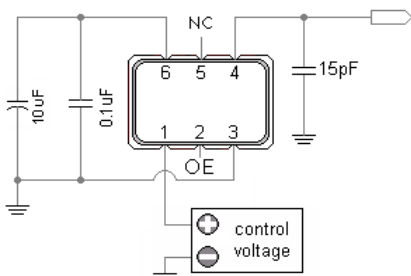
VX						
	Packing Code	Input	Operation	Pulling	Frequency	Stability
					In MHz	
	SMD Type	1.8 : 1.8V	1 : -10~+60°C	A : ±30.0PPM		10 : ±10.0PPM
	756 : 7.0x5.0mm,6P	2.5 : 2.5V	Blank : -10~+70°C	B : ±50.0PPM		25 : ±25.0PPM
	534 : 5.0x3.2mm,4P	3 : 3.0V	2 : -20~+70°C	C : ±100.0PPM		50 : ±50.0PPM
	536 : 5.0x3.2mm,6P	3.3 : 3.3V	27 : -20~+75°C	D : ±200.0PPM		100 : ±100.0PPM
	324 : 3.2x2.5mm,4P	5 : 5.0V	28 : -20~+85°C			
	326 : 3.2x2.5mm,6P		3 : -30~+75°C			
			38 : -30~+85°C			
	Through Hole Type		1 : -40~+85°C			
	F : Full Size, 20.2x12.8mm		A : -40~+105°C			
	H : Half Size, 12.8x12.8mm		B : -40~+125°C			
			C : -55~+125°C			
			D : -40~+150°C			
			X : Custom			

● DIMENSIONS (mm)



PIN CONNECTIONS
 PIN 1 : [Voltage Control]
 PIN 2 : [OE]
 PIN 3 : [Ground]
 PIN 4 : [Output]
 PIN 5 : [No Connected]
 PIN 6 : [V_{DD}]

● TEST CIRCUIT



● OUTPUT WAVEFORM

