

YIC



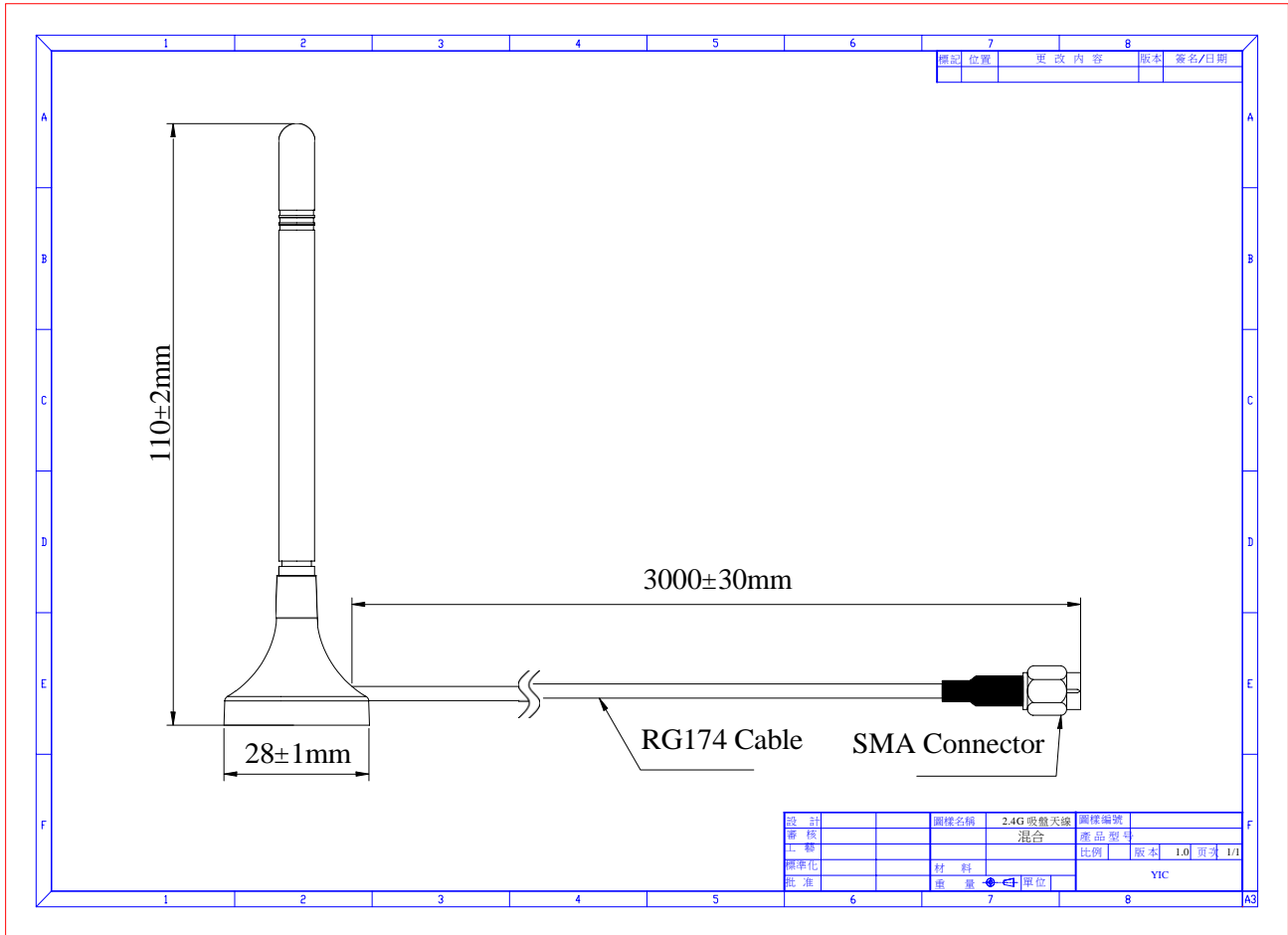
WiFi 2.4GHz External Antenna AT2.4G-28110-0.6BM

Datasheet

Revision History

Date	Reversion	Description
2019/11/01	1.0	First Draft, Based on YIC

1. Antenna drawing (mm)

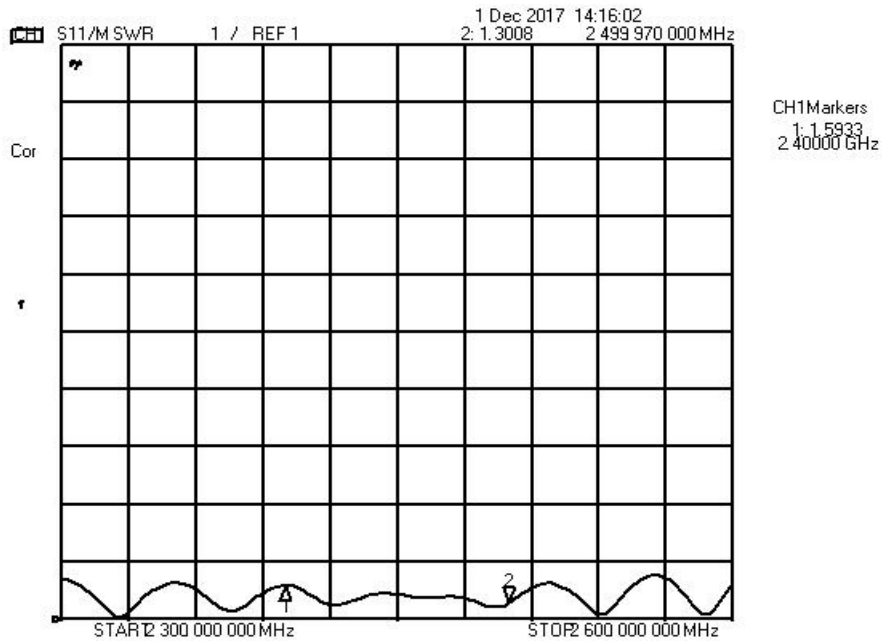


2. Antenna Performance Parameters

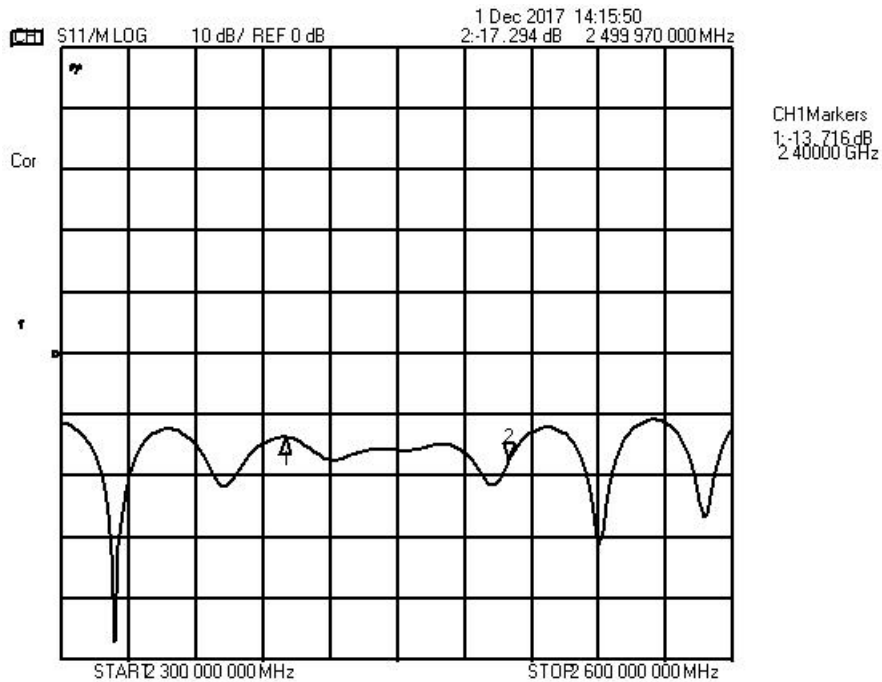
Design Specifications	Typical
Frequency	2400~2500MHz
Gain	0.6dBi (average)
Antenna Efficiency	42%
VSWR	≤2.0
Polarization	Linear
Radiation Pattern	Omni
Impedance	50 Ω
Power Handling	33dBm
Connector Type	SMA Male
Cable Type & Length	RG174 , 3Meters
Overall Dimensions (Antenna)	Φ 28x110mm
Weight	42g
Operation Temperature	-40℃~85℃
Storage Temp	-40℃~85℃

3. Antenna performance test

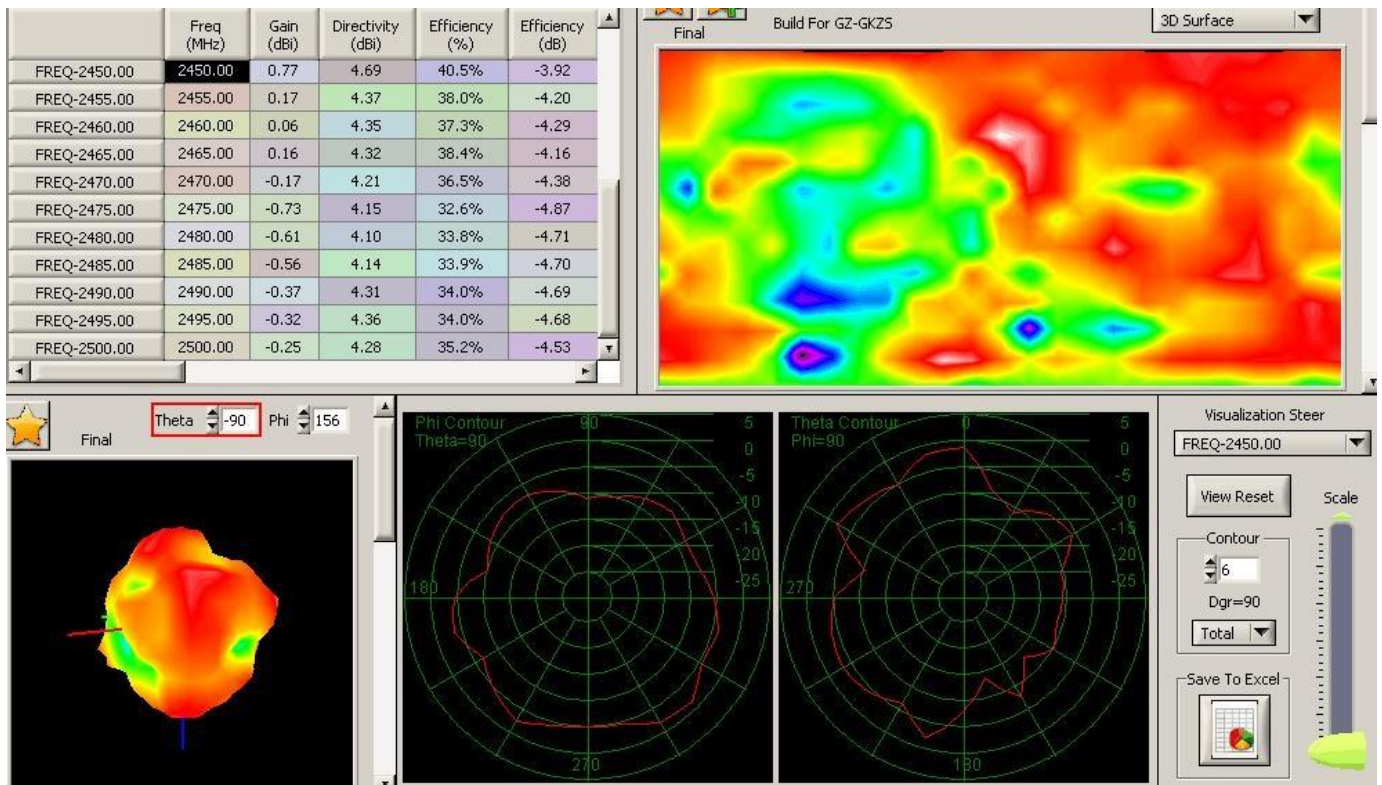
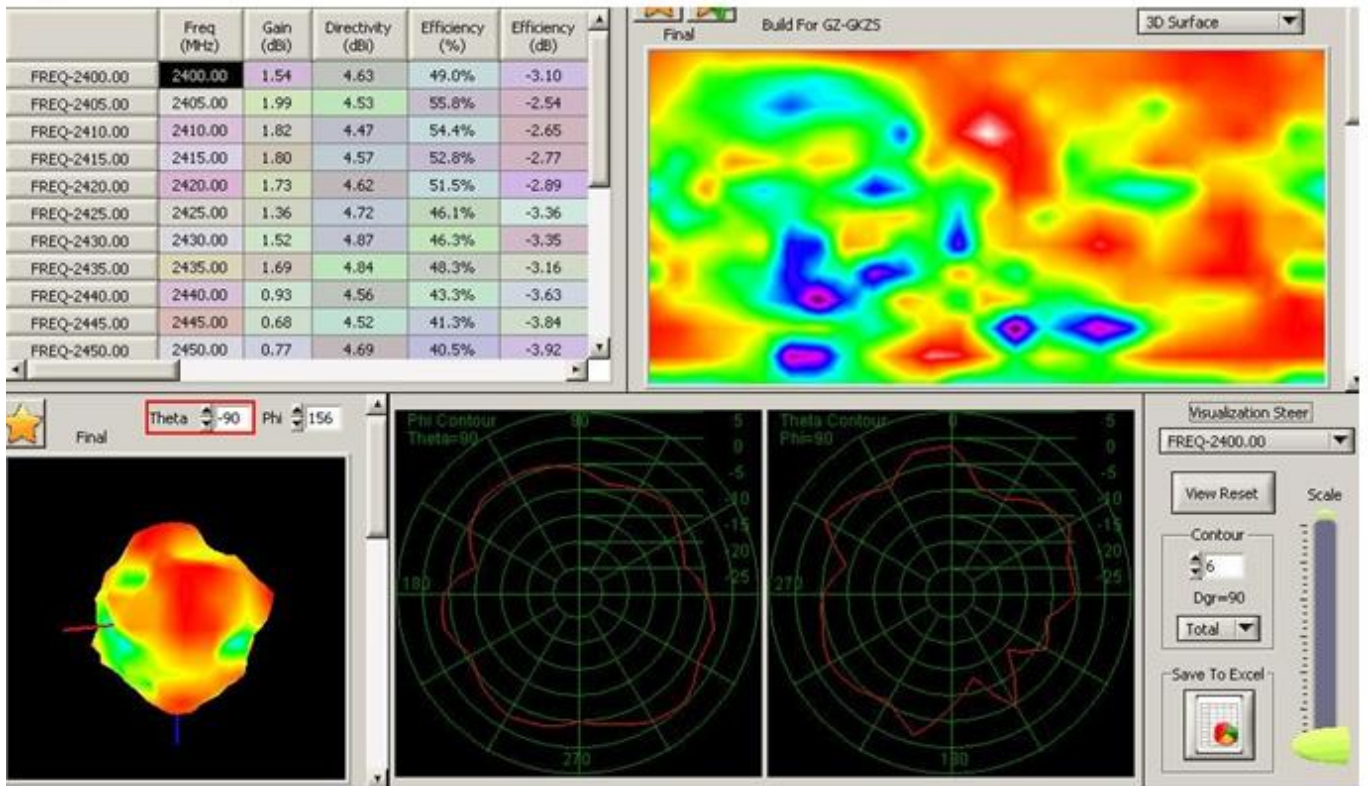
3.1. VSWR



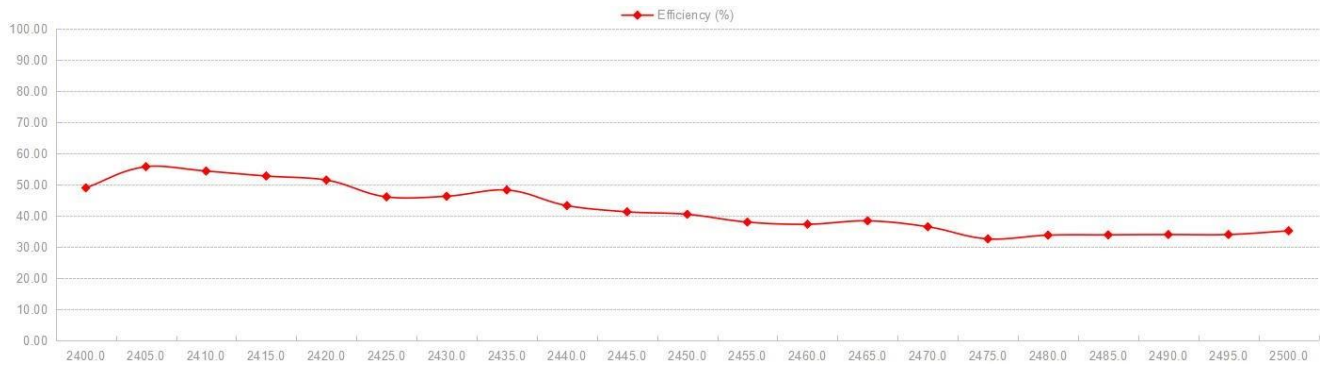
3.2. Return loss



3.3. Direction



3.4. Efficiency



3.5. Gain

