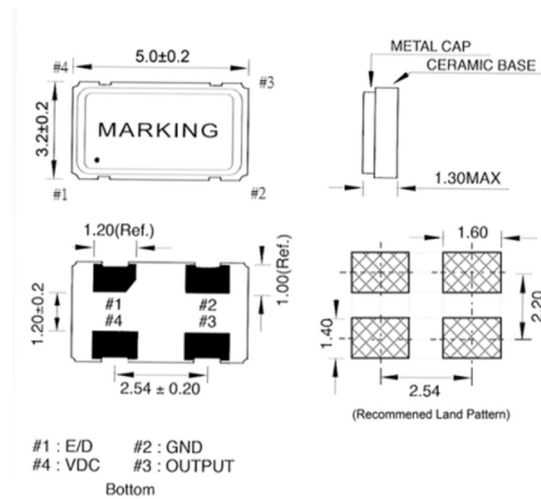


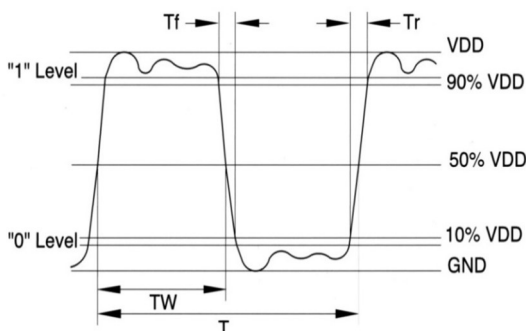
## ● SPECIFICATION

Model		OSC-S5 Series			
Power supply voltage: (5.0V DC available on request)		5V DC±10%	3.3V DC±10%	2.5V DC±10%	1.8V DC±10%
Frequency range		0.500~135.000 MHz	0.500~160.000 MHz		
Storage temperature range		- 55°C ~ + 125°C			
Operation temperature range		- 20°C ~ + 70°C , - 40°C ~ + 85°C , - 40°C ~ + 125°C , specify			
Frequency stability		±10 ppm ~ ±100 ppm			
Current consumption		0.500~25.000 MHz : 5 mA (max)	0.500~25.000 MHz : 5 mA (max)	0.500~25.000 MHz : 5 mA (max)	0.500~25.000 MHz : 5 mA (max)
		25.001~50.000 MHz : 10 mA (max)	25.001~50.000 MHz : 10 mA (max)	25.001~50.000 MHz : 10 mA (max)	25.001~50.000 MHz : 8 mA (max)
		51.000~100.000 MHz : 30 mA (max)	51.000~100.000 MHz : 30 mA (max)	51.000~100.000 MHz : 15 mA (max)	51.000~100.000 MHz : 10 mA (max)
		101.000~160.000 MHz : 40 mA (max)	101.000~160.000 MHz : 40 mA (max)	101.000~160.000 MHz : 20 mA (max)	101.000~160.000 MHz : 15 mA (max)
Output level		C-MOS			
Load		50 pF	30 pF	15 pF	
Output voltage level		V <sub>OL</sub> : 10% V <sub>DD</sub> (max) / V <sub>OH</sub> : 90% V <sub>DD</sub> (min)			
Duty cycle		45% ~ 55% at 1/2 V <sub>DD</sub>			
RISE / FALL TIME		6 nS (max)			
Phase Jitter		0.3 pS (typ)			
Startup time		0.500~32.000 MHz : 5 msec (max) , 32.001~160.000 MHz : 10 msec (max)			
Enable Control	Enable Voltage High	70% V <sub>DD</sub> (min)			
	Disable Voltage Low	30% V <sub>DD</sub> (max)			
Pad1	Disable Current	10 uA (max)			
Aging		±3ppm / Year (max)			

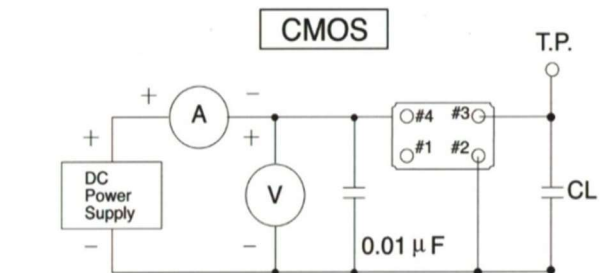
## ● DIMENSIONS (mm)



## ● OUTPUT WAVEFORM



## ● TEST CIRCUIT



\*\*\* Because S3 series has no by pass capacitor.  
So, we recommend our customer to use capacitor 0.01μF  
in join V<sub>CC</sub> and GND.